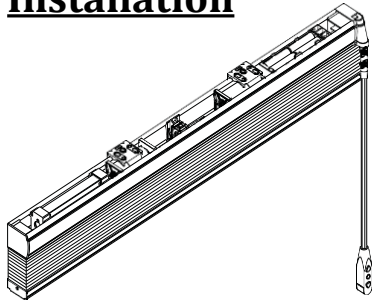


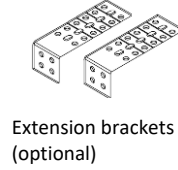
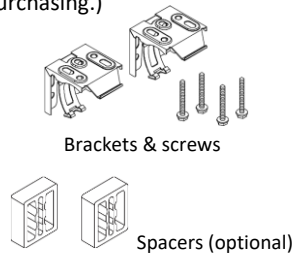
Simple Touch® Wand Aluminum Blind

- Installation, Operation, and Care Instruction -

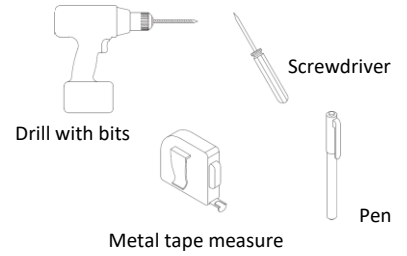
Installation



1. Identify your aluminum blind and parts (your parts may vary, depending on the custom request & size of the blind you are purchasing.)

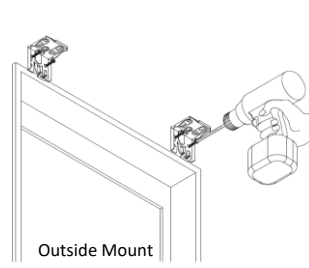
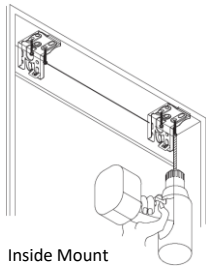


2. Tools you may need (not included)

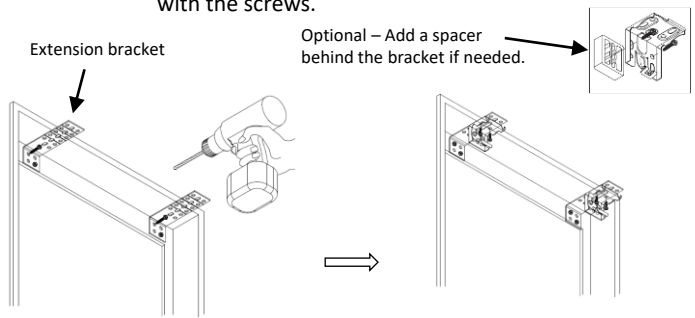


3. Install the brackets

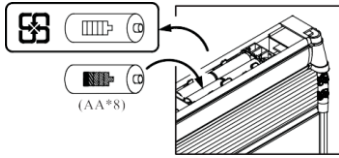
- Mark the bracket locations. Space the brackets evenly and make sure the brackets will not interfere with any mechanism or other internal headrail parts.
- Install the brackets using screws (included) and tighten them completely.
- Make sure all brackets are aligned and level with each other.



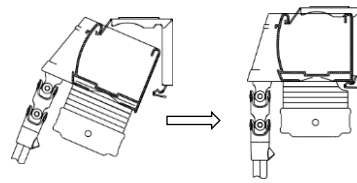
- Install the blind with extension brackets (optional)
 - Install the extension bracket with at least 2 screws.
 - Attach the hidden brackets to the extension brackets with the screws.



4. Put 8 AA batteries inside the battery box.

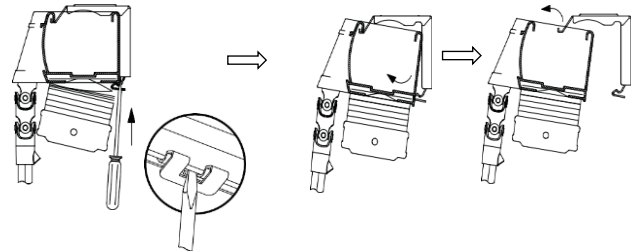


5. Mount the blind onto the brackets



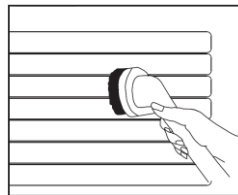
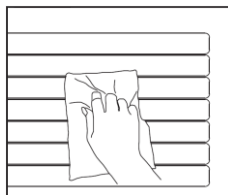
6. Change the batteries.

Remove the blind from the brackets. Replace with new batteries (do not mix new batteries with used batteries. Mount the blind.



Care and Clean

- Wipe the blind periodically with a soft dust cloth or dusting mitt, or vacuum with a soft brush attachment.
- You may clean the blinds using a non-scratched sponge or dampened soft cloth with a mild nonabrasive detergent on the slats. Never use hot water, solvents, or harsh or abrasive cleansers to clean the blinds.



Notes:

- Do not spill water to the headrail and the wand
- Do not clean/ operate the motorized blind with wet hands
- The warranty for your blinds does not cover damage caused by improper cleaning.

WARNING/ADVERTENCIA

Window blind cord can STRANGLE your child. To prevent strangulation, purchase cordless products or products with inaccessible cords.

La cuerda de la persiana puede ESTRANGULAR a su niño. Para evitar el estrangulamiento, compre alternativas cuerda o productos con cuerdas inaccesibles.

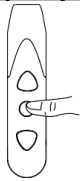
Complimentary Alkaline batteries are included. If the shade is installed in the warm and humid space, please use the Lithium batteries for better performance.

Operation Instruction



This Simple Touch® Wand motorized blind is already programmed with Up and Bottom Limits. Option to program “My Favorite Position”, follow the instruction below. Enjoy your new motorized blind!

Set up My Favorite Position

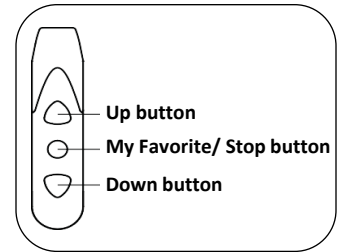
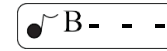


Operate the blind to your favorite position

Press “My Favorite” button for 5 seconds until you hear

Press “My Favorite” button again for 3 seconds, then hear

“My Favorite Position” setup is done.



To Operate the Motorized Blind

- Press **Up** or **Down** button for 2 seconds, the blind will operate without pressing the buttons
- Press “My Favorite” button for 1 second, the blind will operate to the Favorite position.
- Press any button to stop the moving.
- To change “My Favorite Position”, please follow the step “Set Clear”, “Set up Upper Limit”, and “Set up Bottom Limit” below. Then follow the step “Set up My Favorite Position” above.

Programming Instruction



To reprogram this motorized blind, please follow the steps below.

Set Clear



Press all 3 buttons at same time until you hear a long

“Clear” is done.

Set up Upper Limit



Press and hold “Up” button to move the blind to the top.

Release the “Up” button when it hits the headrail.

Press “Up” & “My Favorite” buttons at the same time for 5 seconds until you hear 3 short

“Upper Limit” setup is done.

Set up Bottom Limit



Press and hold “Down” button to move the blind to the ordered drop height.

Press “Down” & “My Favorite” buttons at the same time for 5 seconds until you hear 3 short

“Bottom Limit” setup is done.

To Operate the Motorized Blind Before Setting the Limits

- The blind can only operate by pressing the buttons.
- The “My Favorite” button can only Stop the moving of the blind.

**Note: 1. For your safety, do not use wet hands to operate the blind.
2. Changing the batteries won't change the programming setting.**